

# **e-Sword CD/DVD Menu User Guide**

Stephen Jovanovic

Copyright © 2015. All rights reserved

# Contents

## Introduction

- Disclaimer
- Copyright Information
- About the Menu Program
- System Requirement

## Overview of the Program

## To Run the Program

## The Main Installations

- Installing e-Sword & Tutorials
- Running the e-Sword Presentation
- Exploring Files & Folders

## Resource Installations

- Installing the Resources

## The Bottom Row

- Exiting the Program
- Information About the Program
- Getting Help (this User Guide)
- Resetting the Program

## Sharing/Distributing e-Sword & Resources

- An Introduction
- Creating the Compilation
- Important Notice
- Required Folders for Resources
- Files and Folder for the PowerPoint Presentation

# Introduction

## Disclaimer

This program is not a part of the e-Sword ministry by Rick Meyers. It has not been created to be a part of the e-Sword ministry, and therefore is not associated to Rick Meyers' ministry. This is a 3<sup>rd</sup> party program and is independent of the e-Sword Ministry.

## Copyright Information

e-Sword CD/DVD Menu User Guide, Copyright © 2015, Stephen Jovanovic. All rights reserved.

e-Sword CD/DVD Menu, Copyright © 2007 - 2015, Stephen Jovanovic. All rights reserved.

e-Sword Presentation, Copyright © 2005-2015, Stephen Jovanovic. All rights reserved.

e-Sword, Copyright © 2014, Rick Meyers. All rights Reserved.

## About the Menu Program

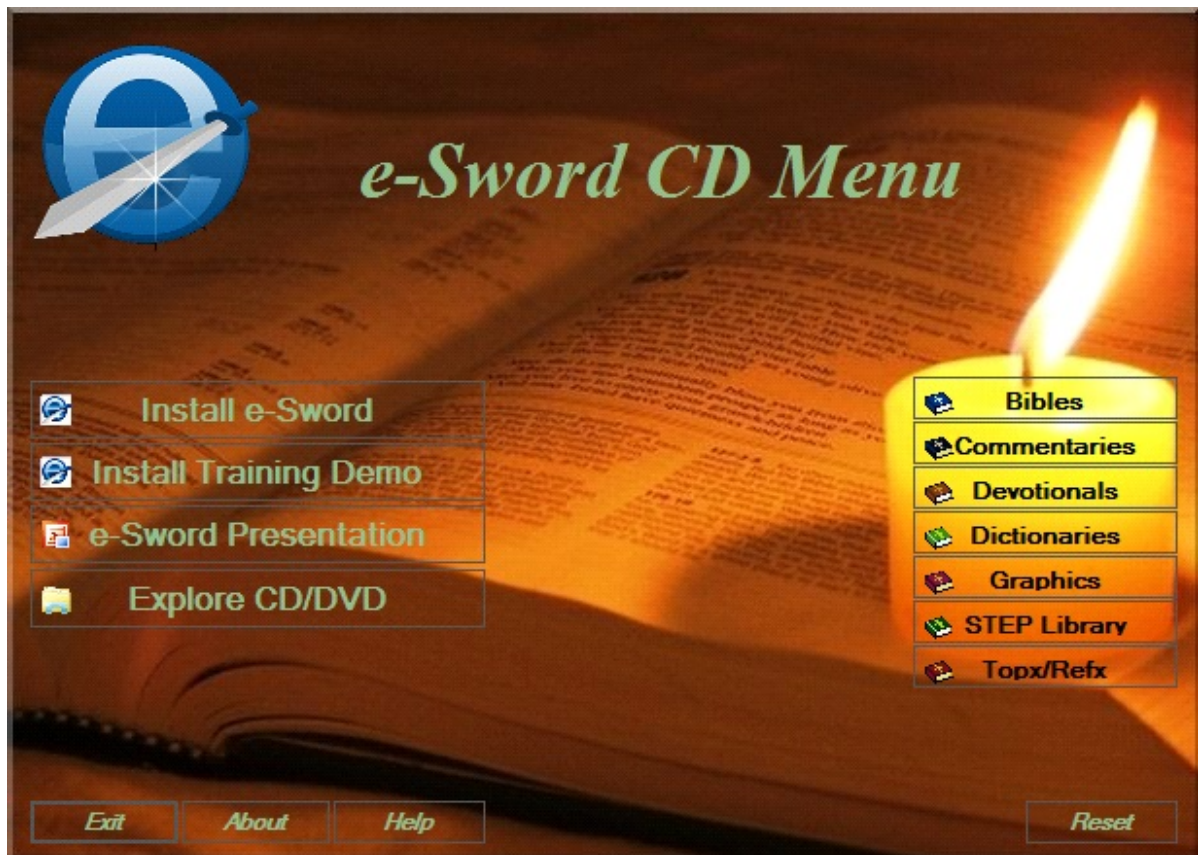


Image 1. e-Sword CD/DVD Menu main interface

e-Sword CD/DVD Menu has been created to install e-Sword and its auxiliary resources. This program has been made in mind for those who wish to use it as part of any user's distribution of e-Sword.

As a result of some success of previous versions, this program has undergone major changes, especially for the installation of the auxiliary resources for e-Sword. The changes made in this

version gives the person, who wishes use it as part of his/her CD/DVD compilation, the ability for this program to install the resources he/she may wish to include in the compilation.

In previous versions, the user could only install official e-Sword resources, and if one wanted to add any more resources to the compilation, the program would not install them, and therefore they could only be done through the Windows file manager (Windows Explorer). What this current version does, is it reads the CD/DVD, and then loads up the files into their respective Combo Boxes. This makes installing resources a great deal simpler, than before.

For this current version, I tried to find another image for the main interface, and experimented with a full screen interface. In regard to an alternative image I couldn't find one as good as what has been and is currently used. And with respect to a full screen interface, that looked horrible. So WYSIWYG (What You See Is What You Get), and I think it looks fantastic.

### **System Requirements**

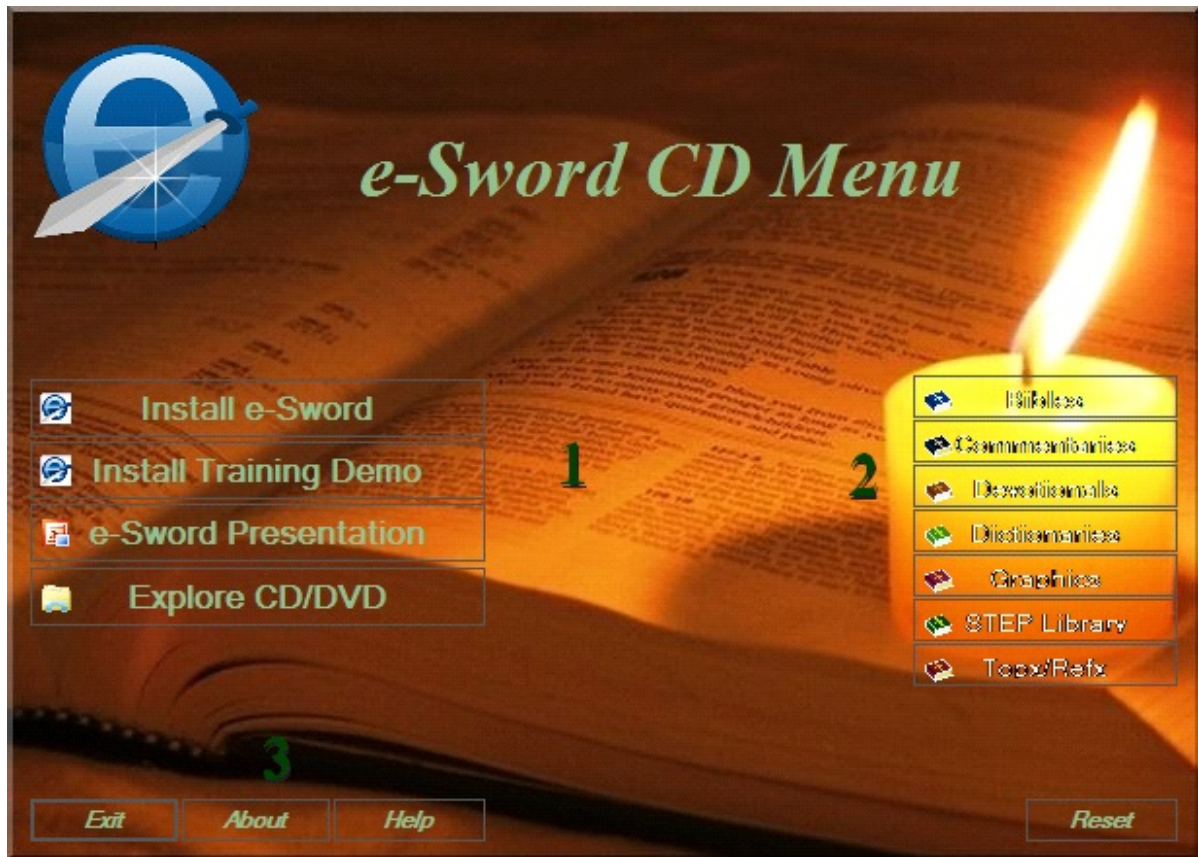
Windows XP, 7, 8, 8.1, and 10.

Either 32 or 64 bit CPU

2GB RAM (which is exceptionally generous and probably doesn't need that much).

Anything more than that is overkill or totally over the top.

## Overview of the Program



**Image 2. Tour of the Main Interface**

Basically the program is divided into three parts:

- The main installations
- The resource installations
- The, what I call, the Bottom Row of things.

The main installation area comprises of installing e-Sword and installing training demos videos of the program. Also in this main area, one is able to play a PowerPoint presentation about e-Sword, and to browse the CD/DVD.

There are seven resource installation buttons which will cause a drop-down combo-box to appear, and from that, one is able to install the resources provided the CD/DVD. Each button will bring up the combo-box for the resources assigned to install. For example, the Bibles' button will bring up the a combo-box which will be filled with different Bible translations one can install, and etc.

The bottom row of buttons are what are commonly used for exiting the program, information about the program, getting help, and etc. They are basically what every program requires.

## To Run the Program

To run the e-Sword Menu Installer, simply insert the CD/DVD into the DVD drive. The CD or DVD has its own autorun.inf file which will cause the installer menu program to load. When the Menu loads, all the resource files that are on the CD or DVD will load into their respective drop-down combo boxes ready for installation (See section on Resource Installations for how to install the resources).

Now, If you get an error message as seen in the Screen Shot below:



**Image 3. Installer Loading Error Message**

Is due the person who gave you a copy of e-Sword has not done either or all of the following:

- Created the required folders for the resources to go into
- Added any resources to the CD/DVD compilation.

Or may have only added some resource types to the CD/DVD compilation, and left others out.

Whichever the case that caused this error, simply click on the **OK** button to continue loading the program and click on the **Explore CD/DVD** button and check to see if there are any files on the CD/DVD, and/or what names have been given to the folders. This program can only fully work if the person has completely complied to the standard to which it can work.

If you are not happy with the compilation you have been given, return it to the person who gave it to you, and request a compilation which meets the standard for this program to fully work.

Below is a list of folders this program requires to read in order to load the resources in their

respective combo boxes.

Folder Names	Resource Types	
Bibles	Bible versions/translations	
Commentaries	Bible commentaries	
Devotionals	Devotional resources	
Dictionaries	Bible, Theological, and other dictionaries	
Graphics	Bible maps	
Step Libraries	STEP formatted books	
Topic Files	Topic Note & Reference Book resources	

If any of the folder names on the CD/DVD differ from the above list, then you will receive that above error message. The above folder names are mandatory for this program to fully work.

For more information about the CD/DVD compilation see the chapter, [Sharing e-Sword & Resources](#).



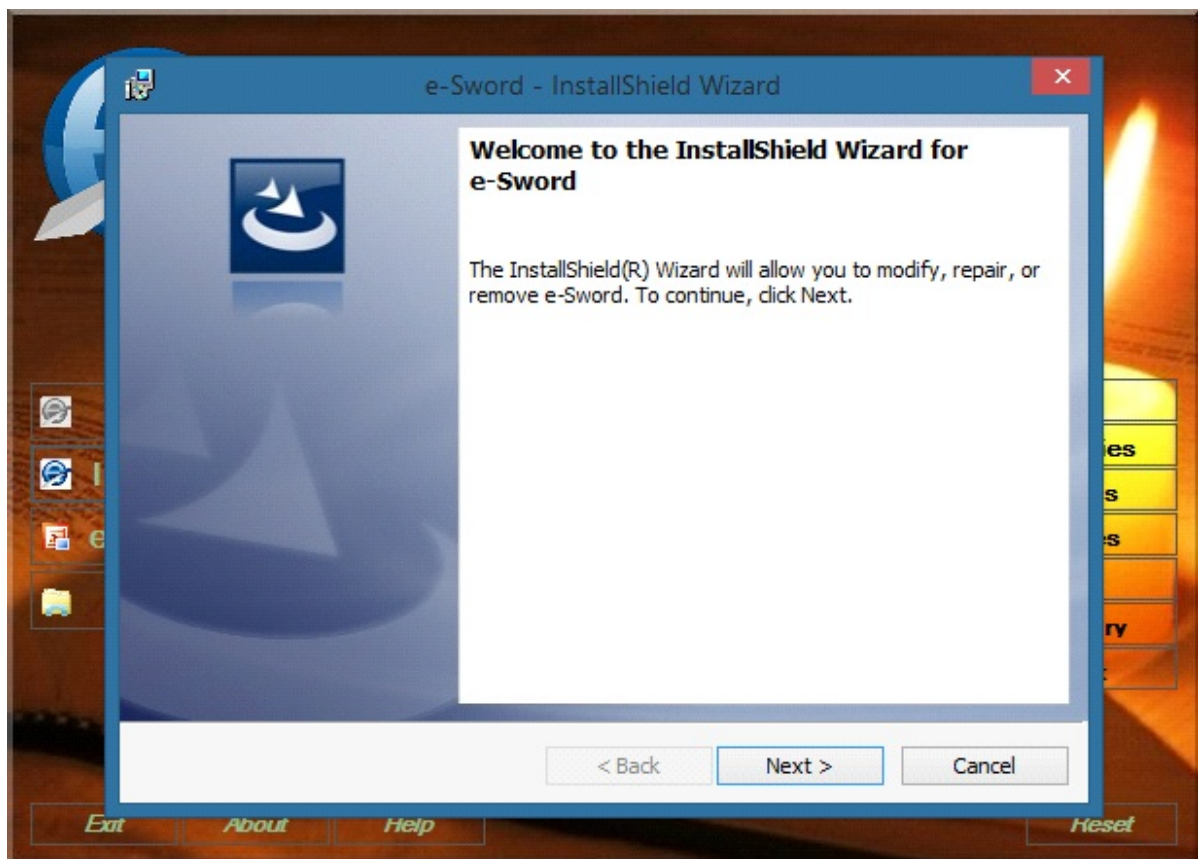
## The Main Installations

There are four buttons in the main installation area, and they are:

- e-Sword Installation
- Training Demo Installation
- Play e-Sword presentation
- Exploring the CD/DVD

### Installing e-Sword & Tutorials

To install e-Sword, click on the **Install e-Sword** button. This will run the e-Sword installer program.



**Image 4. ESM Running the e-Sword Installer**

Once the installer is running, follow the directions by clicking on the **Next** button to install e-Sword. And once the installation of e-Sword is complete, click the **Finnish** button to exit and restart your PC.

To install the Training Demo click on the **Install Training Demo** button. Follow the same directions of the installer. With this installation there is no need to restart the computer.

Once any of the Installer wizards are running, the **Install e-Sword** button, and/or the **Install Training Demo** button are disabled, and will remain disabled even if either of the installation has been canceled. To re-enable the buttons, click the **Reset** button on the bottom right hand of



the Menu program.

### **Running the e-Sword Presentation**

It is hopeful that the e-Sword PowerPoint presentation has been included with the compilation. To run the presentation click the **e-Sword Presentation** button. This presentation **does not** require Microsoft PowerPoint as it is a **standalone** presentation.

If the presentation is not included in the compilation, or that it is not in its required folder, an error message will appear. To check if it is either on the CD/DVD or in its required folder, click the **Explore CD/DVD** button to open Windows File Explorer. The folder you should be looking for is **e-Sword\_Pres**.

### **Exploring Files & Folders**

To explore the files and folders on the CD/DVD (also known as, Removable Media), click the **Explore CD/DVD** button. This will open Windows' File Explorer (in Windows XP, Vista and 7 its known as Windows Explorer), and will open at the root of the CD or the DVD.

The files you should see at the root of the CD/DVD are:

- Autorun.inf (the autorun file to load this program)
- ESM.exe (the menu program that is running)
- ESM Help.pdf (this file)
- e-Sword.ico (Icon file)
- setup1040.exe (Installer for whatever the current version of e-Sword is)
- Training.exe (Installer for e-Sword training videos).

All these files are mandatory for the CD/DVD compilation.

## Resource Installations

Resource installations are done through Dropdown Combo Boxes which are accessed by clicking on a particular resource button on the right side of menu program (see Image 1. e-Sword CD/DVD Menu main interface).

### Installing the Resources

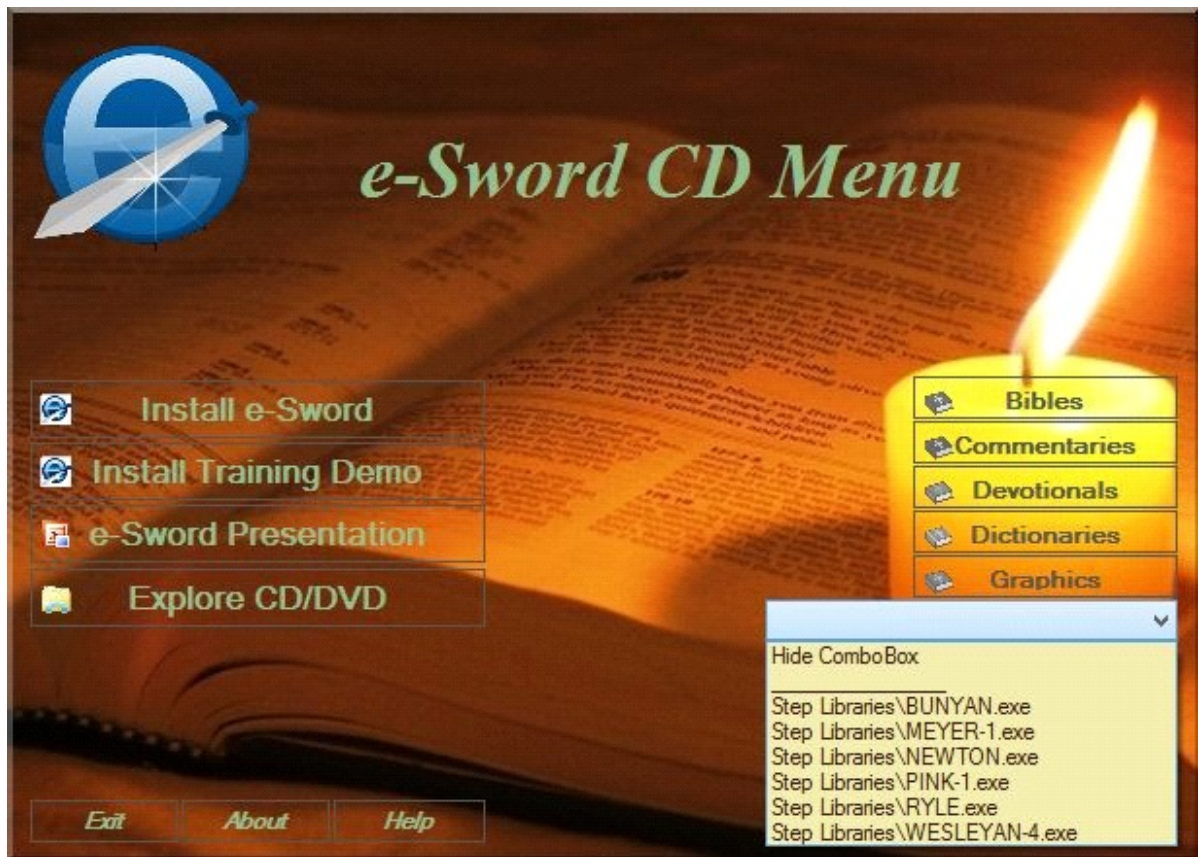


Image 5. ESM Resources

To install any of the resources, click on a particular resource button. This will bring up the combo box for that resource type. When a particular resource button has been clicked all the other buttons are disabled, and the that particular resource button is hidden.

Once the Combo Box has come up, click on the down arrow, and then select a resource and click on it to run its installer. Once the installer has completed the installation, exit from it, and then select the next resource to install, and repeat this process until all the resources you wish to have are installed.

Once you have completed the installation of a particular resource, click on the **Hide ComboBox** item, and this will hide that combo box and restore its button and re-enable all the other buttons.

As seen in the above screenshot, the folder is shown for where the resources are located on the removable media. This, I trust may prove helpful to you if you wish to explore the CD or DVD.

When actually running an installer for the resource, the usual default install settings are as follows:

For Windows XP users: C:\Program Files\e-Sword

For Windows 7, 8, 8.1, and Windows 10 64 bit: C:\Program Files (x86)\e-Sword

For Windows 7, 8, 8.1, and Windows 10 32 bit: C:\Program Files\e-Sword.<sup>1</sup>

If your folder settings for your resources are different from the above, you will need to change the installer's default installation location to where you have your resources installed.

---

<sup>1</sup> For 64 bit editions of Windows, C:\Program Files folder holds 64 bit applications. e-Sword is a 32 bit application.

## The Bottom Row

The bottom row consists of four buttons:

1. The Exit button
2. The About button
3. The Help button
4. The Reset button.

Each of these buttons are stock standard for this kind of program, and information about them in this guide is only for the purpose to give a bit of understanding about them.

### Exiting the Program

The Exit button does not directly shut this program down, but rather calls for an Exit Dialog Window.



Image 6. ESM Exit Dialog

The idea of having this Exit dialog is to give you the opportunity, if a new user of e-Sword, to visit the websites where more information and resources, both free and those which can be purchased, are available.

To exit the Menu program, simply click the **OK** button.

## Information About the Program

All the information about this program is in the About Dialog.

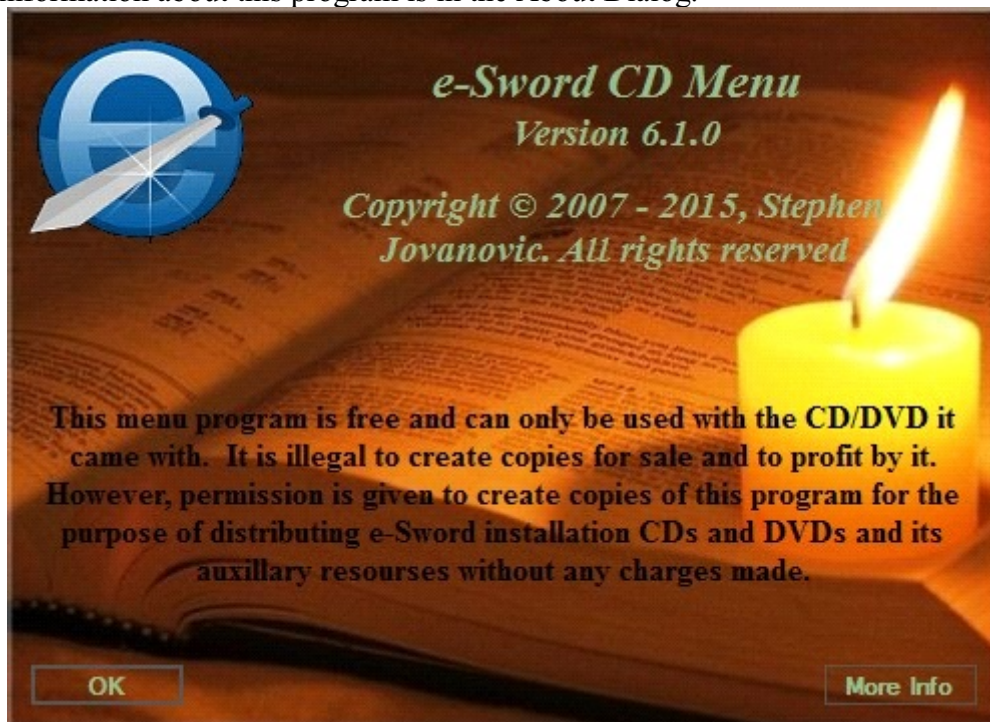


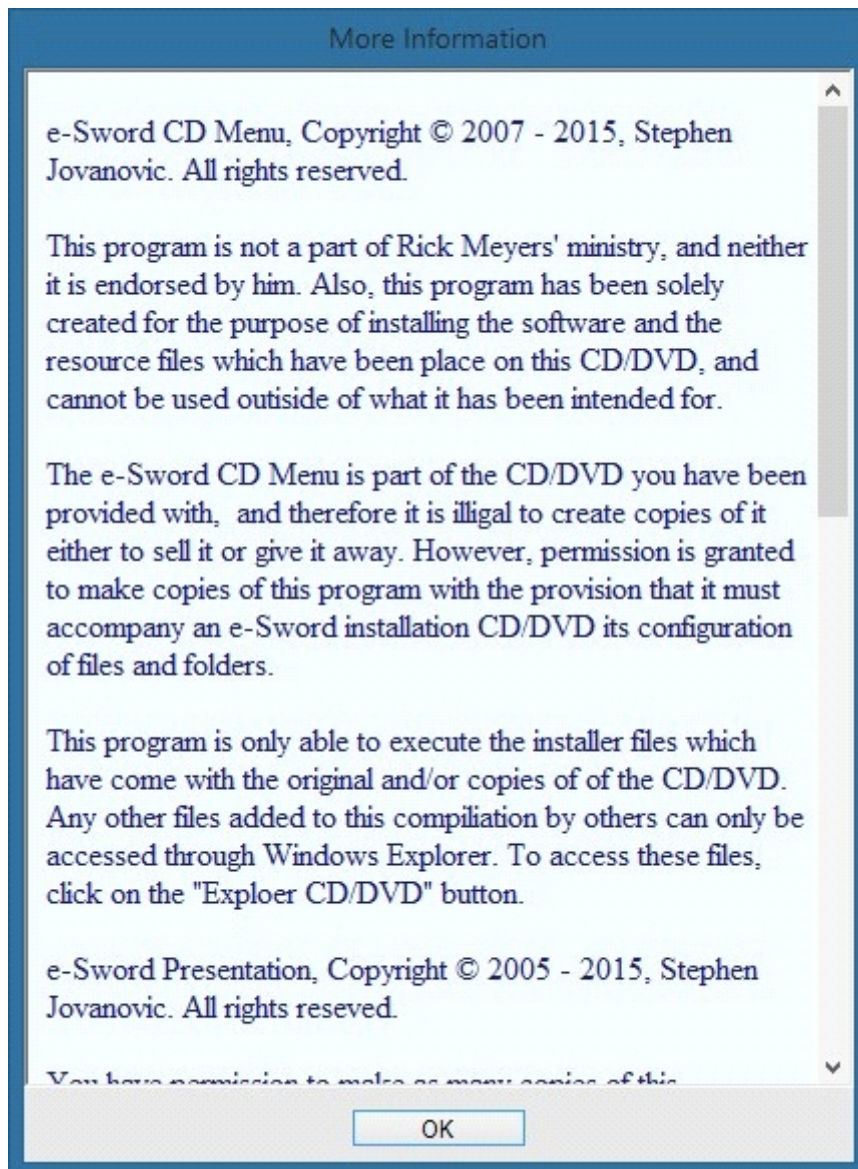
Image 7. ESM About Dialog

There are two kinds of information one gets from this dialog, which are:

1. Gives the version and copyright status of the program
2. Gives a brief user agreement type license/condition for the usage of the program.

Then on the right bottom corner is the **More Info** button, which brings up the More Info Dialog.





**Image 8. ESM More Info Dialog**

The information contained in this dialog gives critical information about this program that all users are urged to read. It contains all the copyright and permissions of this program and add-ons to this program. Also it gives information regarding the responsibilities of users regarding the copyright status of e-Sword, and resources which are included on the CD/DVD you have been given.

### **Getting Help (this User Guide)**

There is no actual dedicated help file for this program, only this User Guide. To access this user guide is to click on the Help button. Also to be able to access this program you will need a PDF reader of one sort or another. Windows 10 comes with a PDF reader ready installed, simply called, "Reader."

### **Resetting the Program**

Resetting the program only resets the main installation buttons:



- The **Install e-Sword** button
- The **Install Training Demo** button

To reset these buttons, click the **Reset** button on the bottom right of the Menu program. The **e-Sword Presentation** button, and the **Explore CD/DVD** button do not require resetting.

With regard to resetting the Resource buttons, see the Installing Resources topic.

# Sharing/Distributing e-Sword & Resources

## **An Introduction**

One of the best things that Rick Meyers has done with e-Sword is to give permission to give away copies of the program to others. In the e-Sword Dialog, Rick states, “You may make copies for ... friends, etc.” If one thing this shows, is that giving e-Sword away to friends and others you may know, shows this can be a ministry to one’s local Assembly and even further.

Initially, when I wrote this program it was for this purpose that it was developed as part of the CD compilation I gave away to those that I knew both friends and acquaintances both locally and internationally. When I saw the eyes of many I gave e-Sword and its resources to people, of the joy written on their faces, and the gratitude expressed by them, knew just how well this menu program could make a difference with installation of e-Sword, and in particular, to the myriads of resources requiring to be installed.

As a result of this, I then I knew that this program would serve well for others who were giving away compilations of e-Sword and its resources, and decided to make this menu program available to the wider e-Sword community.

Sharing and giving e-Sword and its resources is a ministry, and as such, it is there to benefit the whole of the Body of Christ. And also, this program is also given as an aid to that ministry. So, with that in mind, I trust you will be blessed as a result of using this program as part of the compilation of the CDs and DVDs you give to others.

## **Creating the Compilation**

When preparing the compilation of the CD/DVD, a number of factors needs to be considered, and one of the fundamental needs to be considered is the presentation of the media used to give to the person it is being given to. A quality look of the CD/DVD is important because in many respects it is a gift that you are giving to the person. And the presentation of that gift, in the way it looks, is what the person will first see.

If you can do this, and have the kind of equipment for this, then here are some tips of how to make the CD/DVD look professionally great.

- Print either using a printer with CD/DVD printing capabilities, or able to print CD/DVD labels.
- Print using a DVD R/W with Lightscribe or similar.
- Create an Image to be printed on the CD/DVD. There are many images (graphics) one can find on the internet which will look great, or if one has a great imagination, then one can create his/her own image to be printed on the CD/DVD.
- Optionally, have a case for the CD/DVD with a printed cover, or simply an envelope will suffice.

The next part of the creation the compilation for the CD/DVD is creation of the folders. The best method of doing this is to create a special folder in where you can organize the folders for the compilation of the CD/DVD. My suggestion is to use the e-Sword folder in the My Documents

(for Windows 8, 8.1, Documents) folder, and then create a sub-folder, e.g, CD/DVD Compilation, or something similar, and from there one can place all of the files which are to be part of the compilation in their respective folders.

### **Important Notice**

This menu program will only run executable installers, and not any other file type. There are two types of installers one can use, which are:

The original setup installers which e-Sword and the resources came with, or:  
For the resources, self-extracting (SFX) zip files which have an exe extension.

This means a bblx, cmtx, and etc., files will not install onto your hard drive.

### **Required Folders for Resources**

The e-Sword CD/DVD Menu will only recognize folders which it has been programmed for, and load the resources from these default folders. Therefore, if one is going to include resources with the CD/DVD compilation, then these default folders have to be created.

Folders that are required for resources are:

Bibles  
Commentaries  
Devotionals  
Dictionaries  
Maps  
Step Libraries  
Topic

After having created the required folders, place the installers of their respective resource types in their respective folder.

### **Files and Folder for the PowerPoint Presentation**

The default folder for the e-Sword PowerPoint presentation is **e-Sword\_Pres**. All the files required to run the presentation have to be placed in this folder. All files for the presentation are included in the a zip file, which can be downloaded from <http://www.biblesupport.com/e-sword-downloads/file/4903-e-sword-pres10xzip-e-sword-presentation/>

I trust that this program will prove helpful to you, and that you will be blessed in your ministry of sharing and distributing e-Sword and its auxiliary resources.